

# TIME DOMAIN®

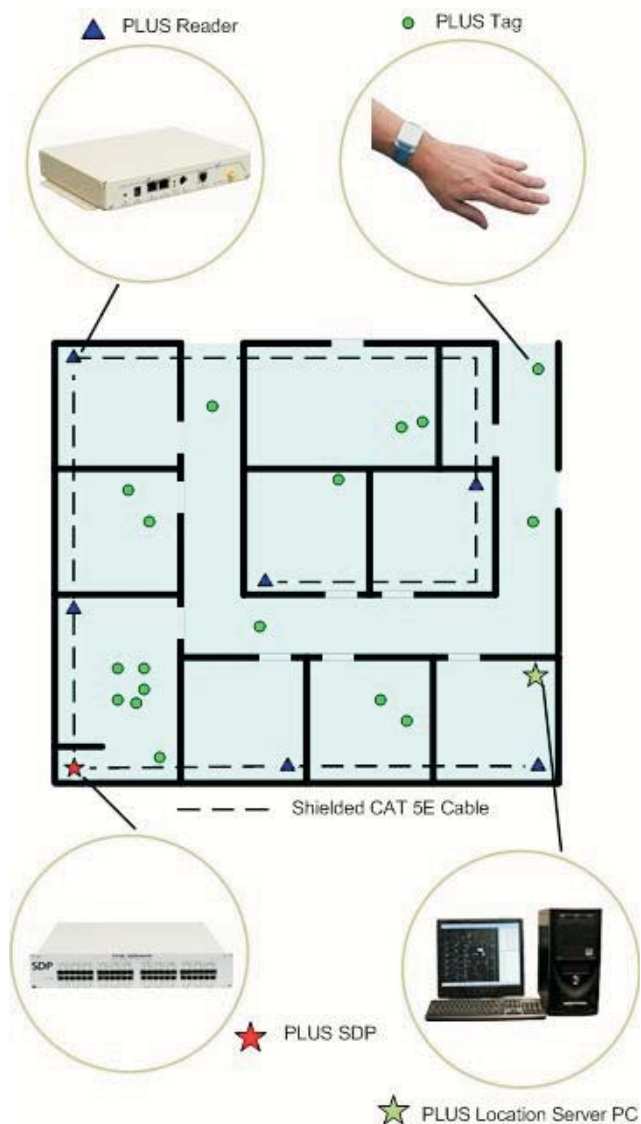
## Precise Location Ultra Wideband System

The Precision Location Ultra Wideband System (PLUS) from Time Domain is a highly accurate Real-Time Location System (RTLS) that enables enterprises to have precise location information on their people and assets. Using Ultra Wideband (UWB) technology, a PLUS network can provide indoor and outdoor position information at accuracy levels previously unavailable from Wi-Fi or other RTLS technologies.

Using Tags, Readers, Synchronization Distribution Panels (SDPs), and our Location Software, a PLUS network can increase real-time productivity by quickly bringing people and assets together, by locating and documenting interactions of staff and patients in healthcare environments, and by securing assets, clients, and facilities.

### PLUS RTLS PERFORMANCE

- Provides highly accurate location information in 1D, 2D, and multi-floor applications
- Can achieve up to 12 inch location accuracy
- Robust network deployment can track thousands of tags
- Battery powered active tags that transmit once per second (1 Hz)
- Indoor, through-wall operation
- Time Difference of Arrival (TDOA) based positioning and tracking
- Time of Arrival (TOA) raw data available via Ethernet interface
- Mounted infrastructure of readers
- Power, data, and signaling provided to readers through shielded Cat 5E cable
- FCC Certified
- ETL Certified



**TAG**

Function Transmits RF packets  
Battery Type Lithium Manganese Dioxide, non-replaceable  
Battery Life 4 Years  
Packet Rate 1 Hz  
Range 75' typical line of sight  
Dimensions 0.5" H, 1.4" W, 1.3" D (13 mm x 36 mm x 33 mm) (body),  
 1.83" W, 1.3" D (46 mm x 33 mm) (wrist strap)  
Weight 0.74 oz (22 g)  
RF Emissions Center Frequency 6.6 GHz, 1/2 Max FW 2 ns, burst emissions  
Operating Temperature -20° C to +50° C  
Storage Temperature -30° C to +60° C  
Housing Material HDPE  
Flame Rating V0  
Cleaning Surface wipe only, do not immerse  
FCC Certification FCC 15.250 certified, FCC ID: NUF-P350-1006  
Warranty One (1) year

**READER**

Function Receives tag packets, demodulates data, and computes TOA  
Dimensions 1.5" H, 8.5" W, 6.5" D (38 mm x 216 mm x 165 mm) (not including antenna)  
Reader Weight 1.8 lbs (816 g)  
Assembly Weight 8 lbs (3.6 kg), includes reader and antenna assembly  
Mounting Replaces a standard 2' x 2' acoustic ceiling tile. Need a minimum of 2" above framework for installation  
Power Interface Input - Sync In port or auxiliary power connector      Output - Sync Out port  
Power Consumption 5.2 W typical  
Input Power 20 W maximum (supplies local unit plus units later in chain)  
Output Power 15 W maximum  
I/O Ports RJ45 Input provides power, data, and synchronization signal  
 RJ45 Output for pass-through of power, data and timing signal to upstream readers  
Network Data Interface 10/100 Mbps Ethernet  
Configuration Interface RS-232 (PS2)  
RF Interface SMA input for connection to TDC supplied antennas  
FCC Certification Class B digital device per CFR FCC Part 15  
Warranty One (1) year

**About Time Domain**

Time Domain is the world leader in Ultra Wideband (UWB) product development and provides solutions that enable enterprises to maximize productivity of their people and assets using a Real-Time Location System (RTLS). Our products and professional services deliver "Precise Location for a World in Motion" to the healthcare, retail, and other vertical markets and are sold and supported through a network of certified channel partners. Time Domain's new Precision Location UWB System (PLUS) products are powered by the innovative PulsON suite of UWB technologies, which are also available for strategic OEM integration.

**24-PORT SYNCHRONIZATION DISTRIBUTION PANEL (SDP)**

Function Provides power and timing synchronization to all readers, pass-through for Ethernet data  
Dimensions 3.47" H, 18.95" W, 16.2" D (88 mm x 481 mm x 411mm)  
Weight 11.5lbs (5.2kg)  
Mounting 19" rack mount or table top operation  
Power Output 420 W with maximum reader load @ 50 Vdc +/-1.0 V  
Power Draw 20 W with no reader load, 565 W for maximum reader load  
I/O Ports 24 LAN In ports; 24 Sync Out ports  
Port Capacity Up to 3 readers/Sync Out port (72 total) powered by SDP, 6 readers/port (144 total) if auxiliary power applied  
Cable Length 90 meters maximum from SDP to last reader in chain  
FCC Certification Class A digital device per CFR FCC Part 15  
Warranty One (1) year

**ORDERING INFORMATION**

Product	Part #
Omni 360° Antenna	1000A01
Omni 360° Antenna (Hinged Mount)	1010A01
Reader	1000R01
Reader External Power Supply	1010R01
24-Port Synchronization Distribution Panel	1000S01
6-Port Synchronization Distribution Panel	1010S01
Tag	1000T01
Location Software	2000S01
Plus Demo Kit 24	4000S01
Plus Demo Kit 6	4010S01
Plus Reseller Certification Training	1900P01

**Time Domain Corporation**

**Corporate Headquarters:**

Cummings Research Park  
 330 Wynn Drive, Suite 300  
 Huntsville, Alabama 35805  
 Phone: 1.256.922.9229  
 Toll Free: 1.888.826.8378

